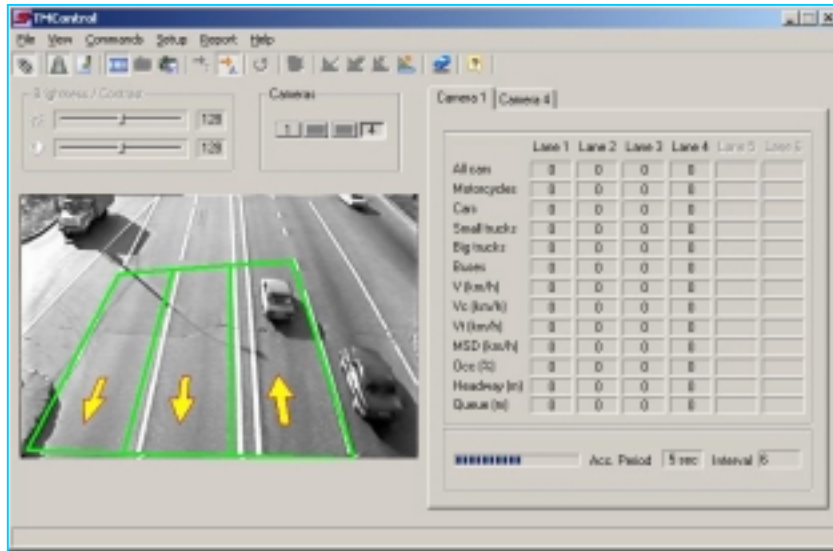


TrafficMonitor

Video Image Processing System for Real-time Traffic Data Collection

TrafficMonitor is designed for cost-effective real-time traffic data collection and transfer.



- ◆ **VOLUME** - number of vehicles passed through each lane
- ◆ **CLASSIFICATION** - five classes: a motorcycle, a passenger car, a minivan/small truck, a bus, a truck over 12 meters
- ◆ **SPEED** - average vehicle speed measured in km/h or in mph
- ◆ **OCCUPANCY** - a time interval any vehicle is in the selected presence
- ◆ **HEADWAY** - average distance between vehicles in each lane
- ◆ **TRAFFIC JAM** detection per each lane

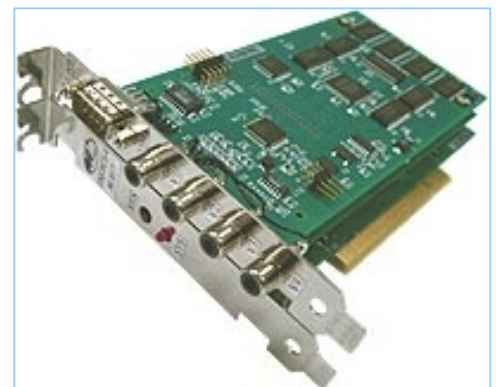
Features:

- ◆ operates with up to 4 video cameras in multiplexing mode
- ◆ has an optimised communication protocol for easy remote connections through the RS232/485, Ethernet, analog, digital or GSM modem
- ◆ provides with compression of images in JPEG format (optional)
- ◆ generates reports in XML format
- ◆ provides with reliable operation under different weather conditions (day, night, shadows, rain, snow, fog).
- ◆ has an API for OEM's integration in existing ITS application software

TM-PCI-4

The TM-PCI-4 is a high-performance low cost solution for desktop PC to improve safety and assist in traffic management. This includes the NeuroMatrix(r) BM1 video-image processing (VIP) block with embedded firmware and PC client software (without CCTV camera, power supply and weather proof enclosure).

Size: 188x131x40 mm
 Temperature range: +10...+35 C
 Power consumption: approx. 5 W



The BM1 VIP block can be supplied with strong software development tools including C++ compiler, assembler, debugger, NeuroMatrix NM6403 DSP Processing Library (NMPL) and Hardware Abstraction Library (BM1HAL).

TME-12/220

TME-12/220 is an Embedded Video Processor for Road Traffic Analysis placed into rugged container with a power supply (12V/220V) and fan.

The traffic information is obtained via RS-232/485 communication ports.

TME can be used in embedded systems, for example, a traffic light controller. This system is designed to permit simple installation and easy integration into existing ITS infrastructures.

Size:	230x105x105 mm
Weight:	1.5 kg
Temperature range:	- 40...+75 C
Power consumption:	approx. 15 W
Moisture:	75% (at 30 C)



TMK

TMK is a Standalone Video Processor for Road Traffic Analysis. It is placed into weatherproof container with a power supply 220V.

The traffic information can be obtained via RS-232/485 communication ports as well as Ethernet, analog, digital or GSM modem.

TMK is designed for standalone outdoor applications, for example, a Road Traffic Analysis Network controller.

Size:	520x370x210 mm
Weight:	9 kg
Temperature range:	- 40...+75 C
Power consumption:	approx. 25 W
Moisture:	75% (at 30 C)



All data processing is performed inside of TrafficMonitor.

NO Personal Computer REQUIRED!